

Safe Harbor
Peer Support Services

ANNUAL REPORT

Report to the Community



FY2022 & 23

Annie's Outreach - Delaware, Ohio
No Limits Outreach - Edison, Ohio



A Message From Our Executive Director

The end of June 2023 marked my one year anniversary as the Executive Director of Safe Harbor Peer Support Services. If the saying "Time flies when you are having fun" is true, then this year has been my most fun yet! I have met so many wonderful people, leaders, stakeholders and peers along the way; and I have felt welcomed and connected.

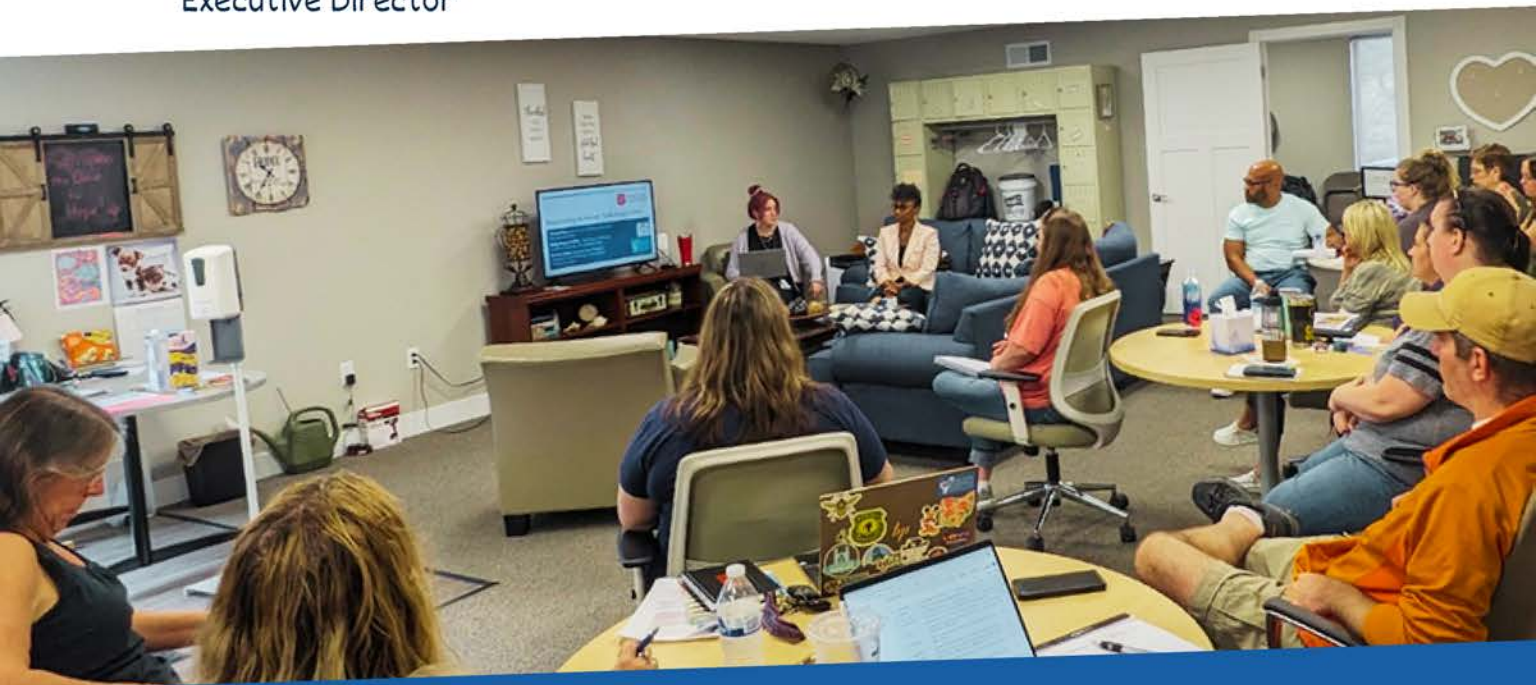
Many changes occurred in 2021 and 2022 to prepare us for the new direction of Safe Harbor under my leadership. We will build on our past successes as we create new opportunities for the future. I invite you to walk this crucial journey with us as we seek to enhance our services to those with mental health and substance use disorders. Without your support, our task would be so much more difficult.

I look forward to the future as we continue our work of encouraging and supporting each individual's path to recovery. I offer my sincere thanks for all you do to support our mission at Safe Harbor Peer Support Services.

Sincerely,

Diane Bricker

Executive Director



Safe Harbor Peer Support Services

2022-2023 FINANCIALS

THE GROUP OF DELAWARE COUNTRY
dba SAFE HARBOR PEER SUPPORT SERVICES
STATEMENTS OF FINANCIAL POSITION
AS OF JUNE 30, 2023 and 2022

	<u>2023</u>	<u>2022</u>
ASSETS		
Current Assets		
Cash	\$ 131,929	\$ 125,336
Accounts Receivable	212,658	39,114
Prepaid Expense	1,130	2,810
Total Current Assets	<u>345,717</u>	<u>167,260</u>
Other Assets		
Security Deposit	3,368	3,368
Total Other Assets	<u>3,368</u>	<u>3,368</u>
Long Term Assets		
Property and Equipment (Net)	720	10,884
Operating Lease Right-of-Use Asset	62,857	-
Total Long-Term Assets	<u>63,577</u>	<u>10,884</u>
TOTAL ASSETS	<u>\$ 412,662</u>	<u>\$ 181,512</u>
LIABILITIES AND NET ASSETS		
Current Liabilities		
Accounts Payable	193	4,869
Delaware-Morrow Mental Health and Services Board-Advance	15,000	15,000
Payroll Liabilities	10,508	2,541
Short-Term Operating Lease Liability	36,708	-
Total Current Liabilities	<u>62,409</u>	<u>22,410</u>
Long-Term Liabilities		
Long-Term Operating Lease Liability	26,149	-
Total Long-Term Liabilities	<u>26,149</u>	<u>-</u>
TOTAL LIABILITIES	<u>88,558</u>	<u>22,410</u>
NET ASSETS		
Without Donor Restrictions	324,104	159,102
With Donor Restrictions	-	-
TOTAL NET ASSETS	<u>324,104</u>	<u>159,102</u>
TOTAL LIABILITIES AND NET ASSETS	<u>\$ 412,662</u>	<u>\$ 181,512</u>

To obtain a complete audit report please, contact Safe Harbor Peer Support Services Finance Office.



FY2022-23 HIGHLIGHTS

COMMUNITY PARTNERSHIPS & EVENTS

PLACES TO GO...
PEOPLE TO SEE!



Drug Take-Back Days



NAMI Fest



Community Health Fairs

PRIDE Fest



Human-Trafficking Awareness



Stockhands

Suicide Prevention Walks
First Fridays



Morrow Co. Fair

- Our "Can't Do Without" Partners**
- Consolidated Energy
 - DAPP- Delaware & Morrow Cos.
 - Delaware Housing Coalition
 - Delaware Co. Specialized Court Dockets
 - Delaware Community Foundation
 - Delaware Morrow Mental Health & Recovery Services Board
 - Delaware Rotary Club
 - Family and Children's First Councils
 - Mid-Ohio NAMI
 - Morrow Co. Kiwanis Club
 - Morrow Co. OSU Extension Office
 - Morrow Co. Sheriff's Office (Jail Outreach)
 - Ohio Peer Recovery Organization
 - Stockhands, Horses for Healing
 - Suicide Prevention Coalitions
 - Southeast Healthcare
 - Tomorrow Center
 - United Way of Delaware Co. & Morrow Co.



SAFE HARBOR
PEER SUPPORT SERVICES





...a beacon of hope

Safe Harbor Peer Support Services is a beacon of hope and help for those with behavioral health concerns. We provide a welcoming, safe environment at our two peer support centers located in Delaware and Morrow counties.

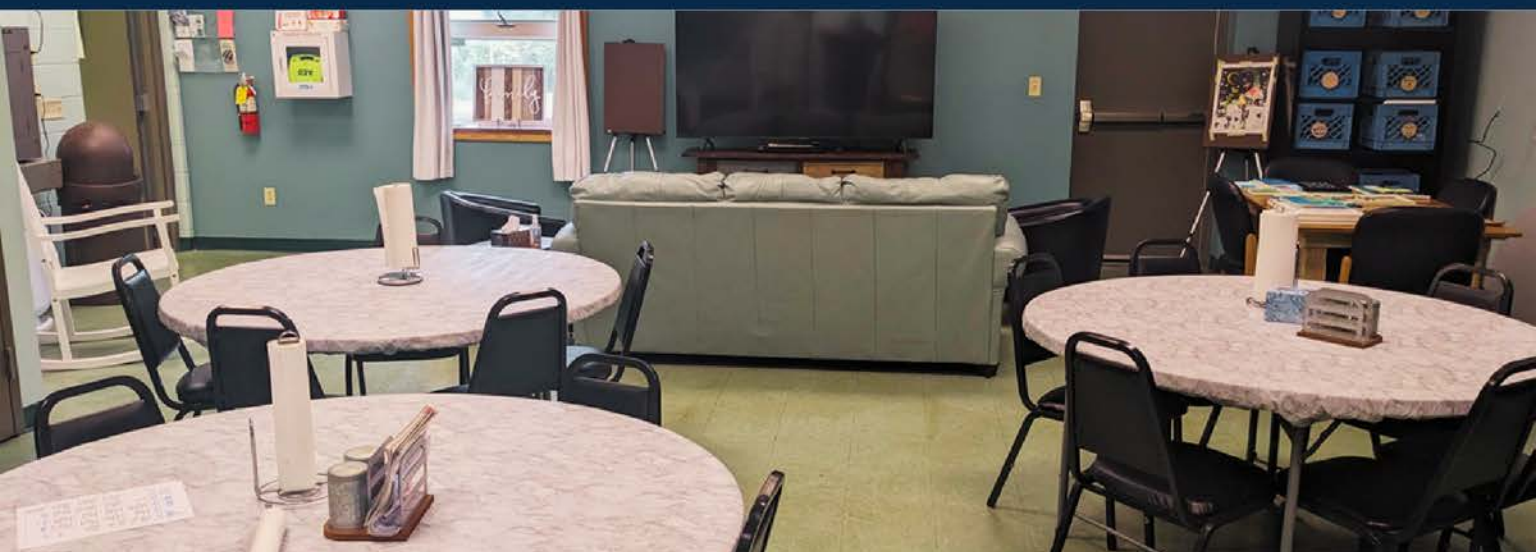
Whether you are experiencing anxiety or depression for the first time or have a known mental health condition or substance use disorder, you are invited to visit anytime during open hours. No need to schedule.

Both centers offer a variety of educational and wellness programs and activities throughout the month. In addition to peer support and programs, guest speakers are invited to share information and introduce community resources.

A nutritious lunch is served daily, and countywide transportation is offered free of charge.



ANNIE'S OUTREACH CENTER – DELAWARE LOCATION



NO LIMITS OUTREACH CENTER – EDISON LOCATION

...get involved

Make an impact in your community with your donation.
Please consider donating directly to Safe Harbor or
through one of our valuable partners listed at
www.shpss.org.

You can also get involved by volunteering or becoming
a peer support specialist. If you have food or physical
goods you would like to donate, please call one of our
two centers:

MAKE A DONATION



Annie's Outreach Center

241 Paddock Court, #3
Delaware, Ohio 43015
Monday – Friday: 9am – 3pm
740-363-1619

No Limits Outreach Center

4046 Twp. Rd. 246
Edison, Ohio 43320
Monday-Friday: 9am-3pm
419-946-5900

FOR MORE INFORMATION,
PLEASE VISIT US AT WWW.SHPSS.ORG

